

**PM JANMAN:
Health Infrastructure**

Problem Statement

Particularly Vulnerable Tribal Groups (PVTGs) often face significant health disparities due to various socio-economic and geographical factors

Some key Factors impacting Health of PVTGs include:

1. Availability of Healthcare Infrastructure
2. Accessibility to the existing health infrastructure
3. Disease prevalence (communicable /non communicable)
4. Availability of adequate health professionals in the existing health facilities and as per disease prevalence
5. Quality of water sources
6. Socio Economic status (access to basic amenities that impact health)
7. Cultural practices and beliefs : How do they impact health seeking behavior? (influence of traditional medicines, taboos, etc. could be an influence)
8. Government Interventions / initiative taken to improve health outcomes?

Current Intervention
planned focused on
infrastructure

About the Intervention

1

OVERVIEW

To saturate all uncovered PVTG household and Habitation across 18 states and 1 UTs

2

VISION

To deploy Mobile Medical Units (MMUs) in the habitations where there are no Health Centers in 5 Km range under National Health Mission (Rural) of MoH&FW. It is provisioned to relax the extant norms of MMUs and provide 10 MMUs per PVTG dominated district.

3

OBJECTIVES

Improve community infrastructure and ensure the saturation of individuals/households by providing MMUs and health facilities to PVTG habitations and villages

4

TARGET

The mission target is to deploy 1000 MMUs by FY 2025-2026 to cover all habitations without health centres.

5

PARAMETERS

Deploy 1000 MMUs: Sanction and deploy 10 MMUs in each district with a large number of PVTG habitations, moving along prescribed routes. Unit cost: Rs. 33.38 lakh per MMU. Funding from NRHM, MoH&FW under DAPST funds.

To identify gap in health Infrastructure:

1. Population Distribution: Where are the PVTG Hamlets located?
2. Existing Infrastructure & Proximity to Health care facilities?
3. Accessibility: Identify areas with limited accessibility to health care infrastructure or geographical barriers

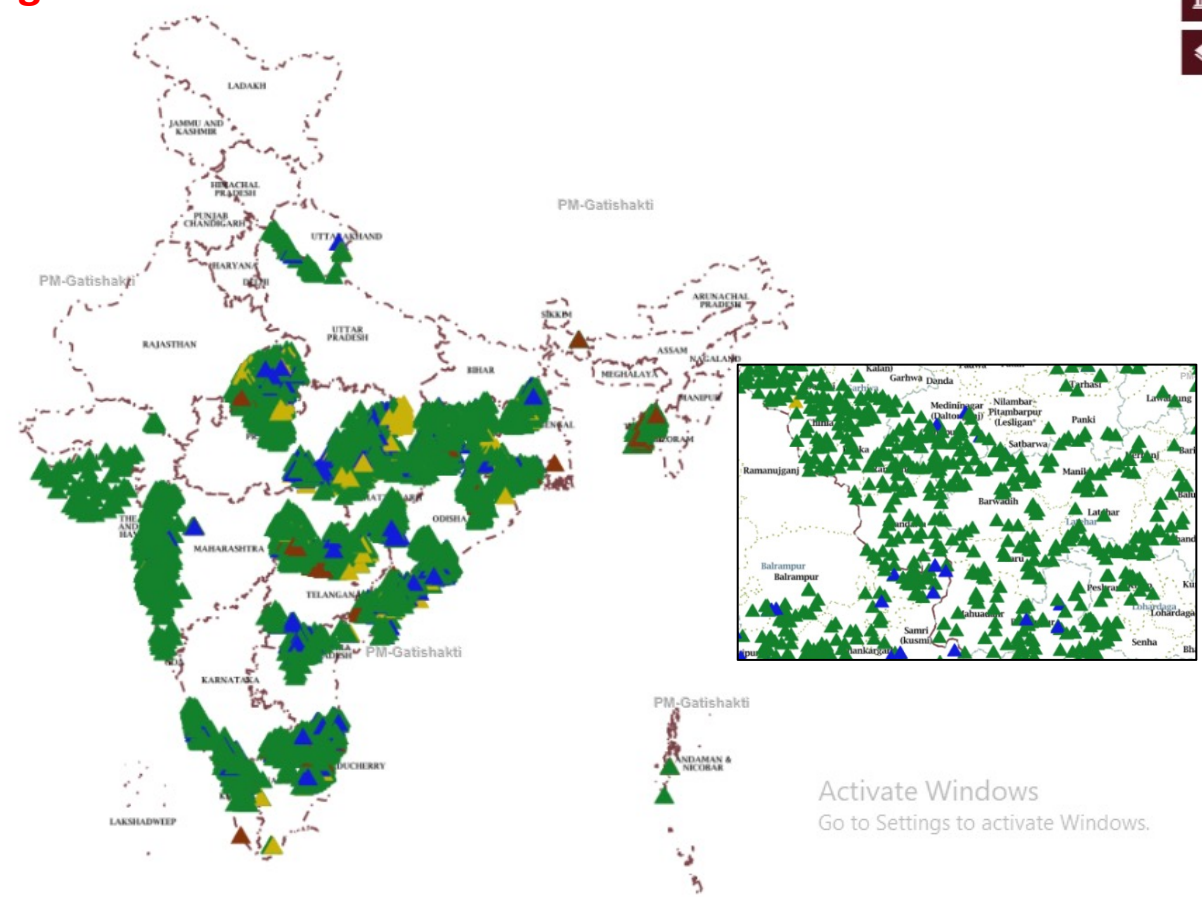
Help in Identifying infrastructure facility & accessibility issues

Proposed Solution: For unserved areas, mobile vans in every 14 days

Latitude :8.3415 Longitude :70.5099

PVTGs Hamlets captured through Mob. Application

- 18 - States & UT
- 13 lakhs -Households
- 75 - PVTG Tribes
- 37 Lakhs -PVTG Population



Legend

PVTG Habitation

- 🟢 Approved by State (26758)
- 🟡 Validate by District (1928)
- 🟠 Approved by District (2246)
- 🔴 Rejected by State (632)
- 🟠 Pending (958)
- 🔴 State Boundary

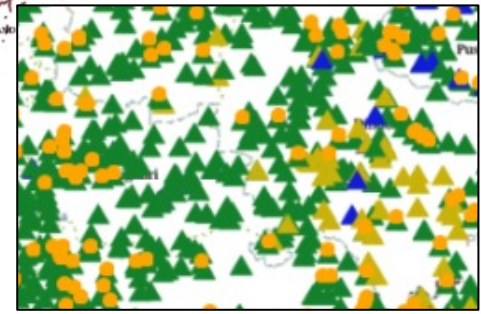
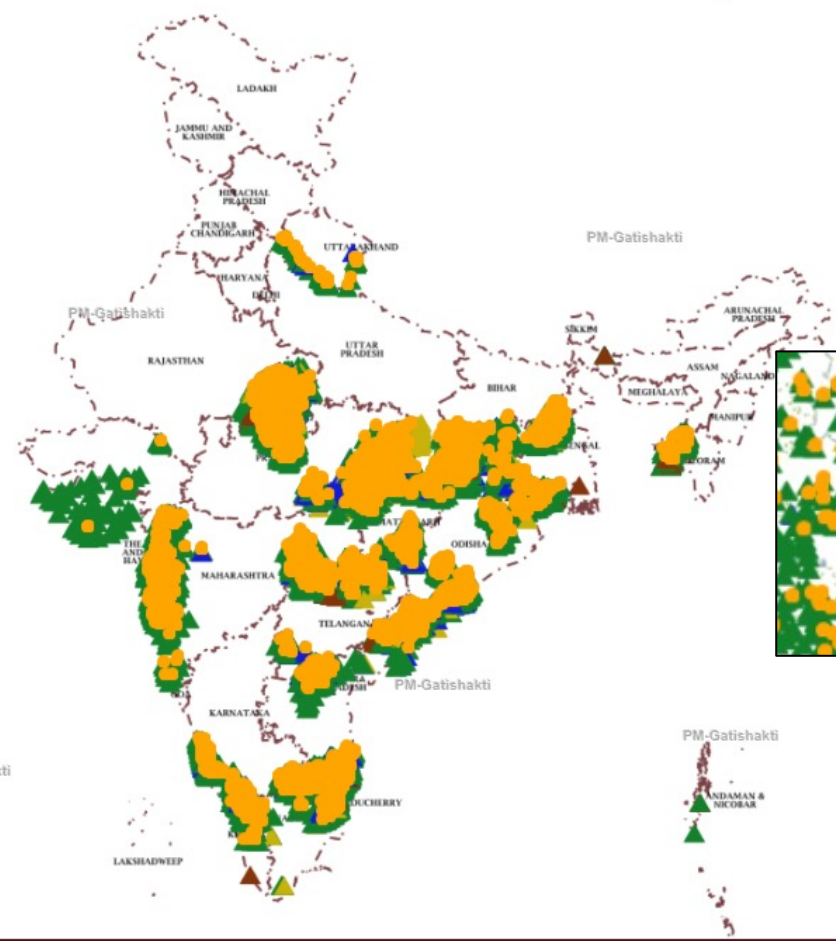
Activate Windows
Go to Settings to activate Windows.

Latitude : 8.8413 Longitude : 79.3415

PVTG Hamlets having Gap of Health Facility

32595 - PVTGs Hamlets

7752 - Gap of Health Facility



Legend

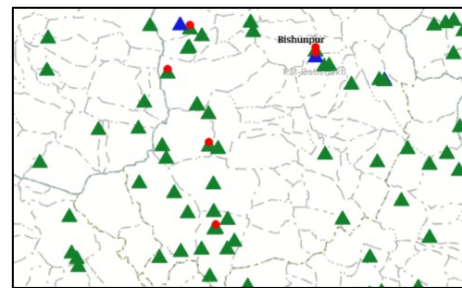
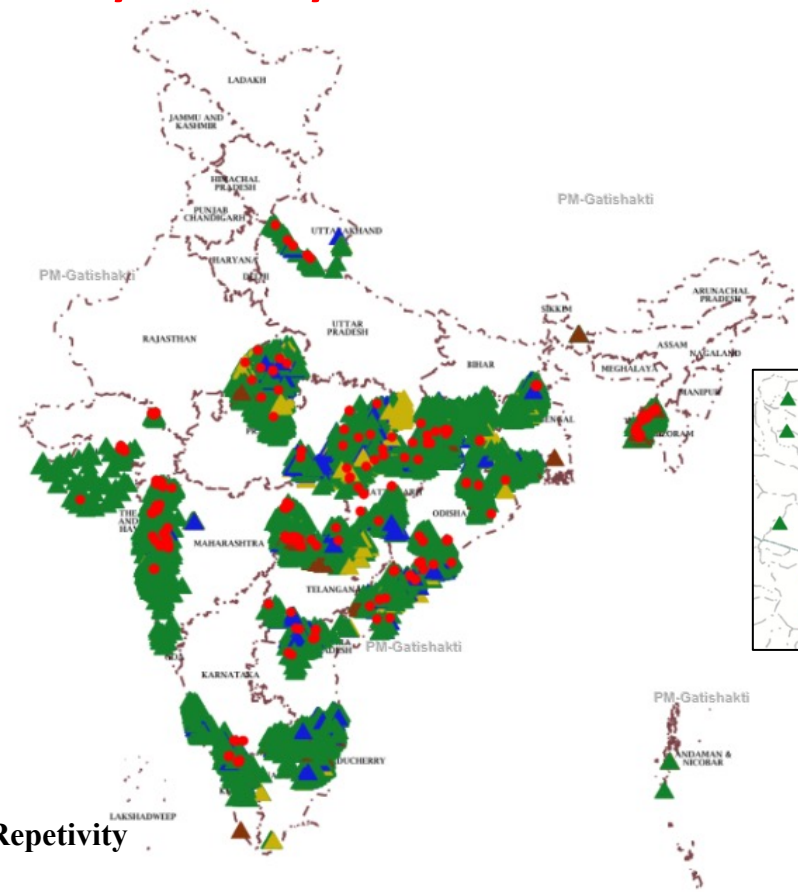
- & Habitation Without Health Center (7752)
- PVTG Habitation**
 - Approved by State (26758)
 - Validate by District (1928)
 - Approved by District (2246)
 - Rejected by State (632)
 - Pending (958)
- State Boundary

Activate Windows
Go to Settings to activate Windows.

Latitude :34.6719 Longitude :108.3874

Mobile medical Unit Proposed by Ministry of Health & Family Welfare

249 MMUs Proposed



Legend

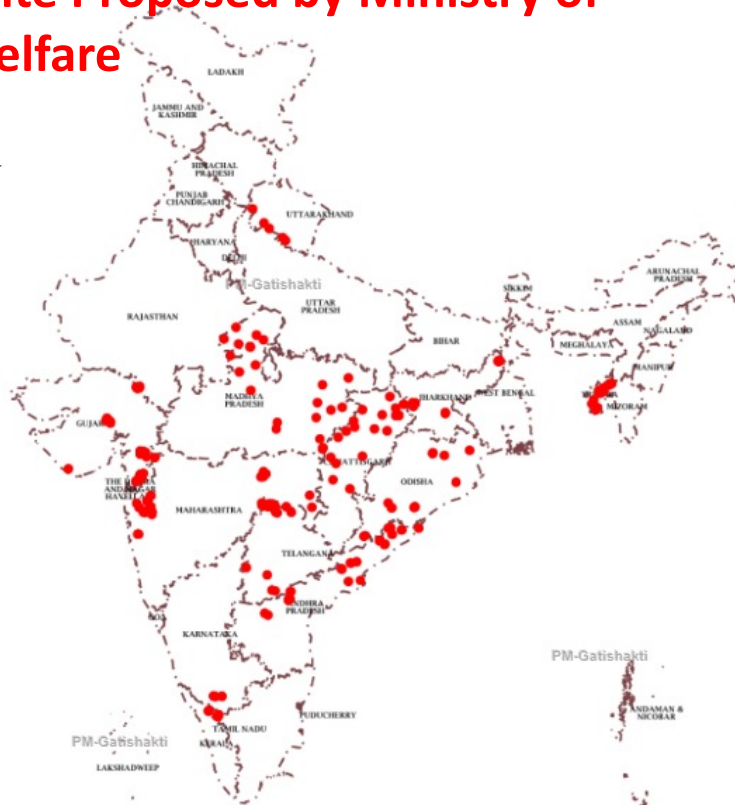
- Medical Mobile Unit (249)
- PVTG Habitation**
- Approved by State (26758)
- Validate by District (1928)
- Approved by District (2246)
- Rejected by State (632)
- Pending (958)
- State Boundary

Every 15 Days Repetivity

Activate Windows
Go to Settings to activate Windows.

Mobile medical Unite Proposed by Ministry of Health & Family Welfare

249 MMUs Proposed



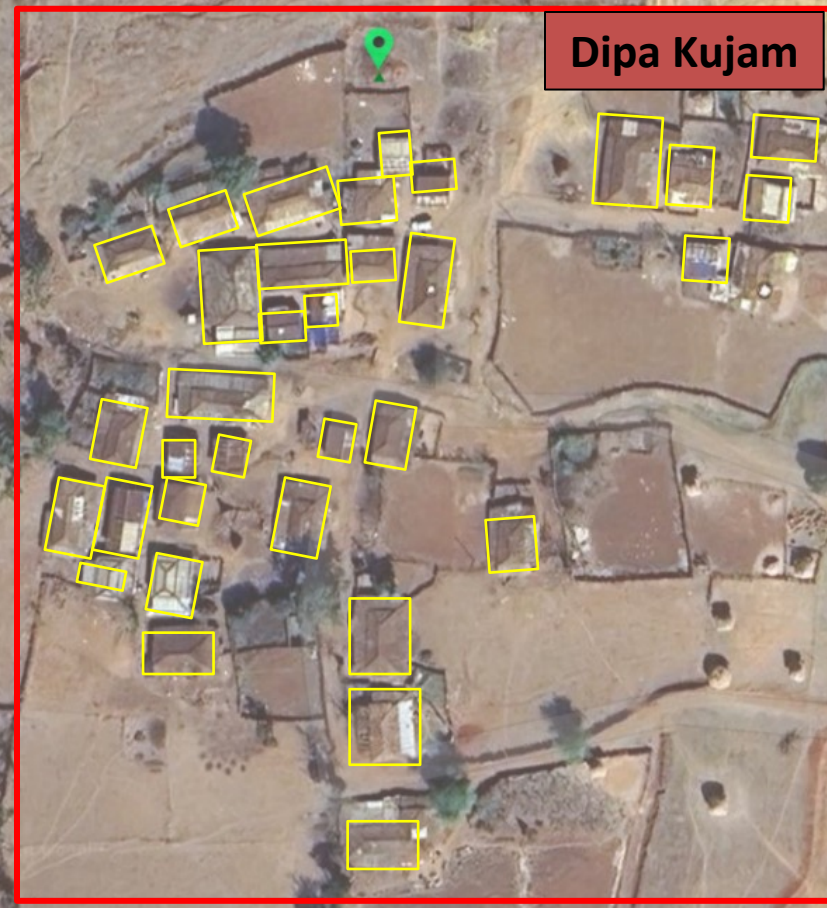
Latitude :35.6507

State wise MMU Proposal		
Sr. No.	State name	Total Count in Number
1	Andhra Pradesh	31
2	Chhattisgarh	21
3	Gujarat	38
4	Jharkhand	19
5	Karnataka	03
6	Kerala	04
7	Madhya Pradesh	22
8	Maharashtra	41
9	Odisha	13
10	Rajasthan	01
11	Tamil Nadu	05
12	Telangana	25
13	Tripura	21
14	Utter Pradesh	01
15	Uttarakhand	04

- Village Boundary
- Sub-District Boundary
- District Boundary
- State Boundary
- MMU

State	: Jharkhand
District	: Gumla
Taluka	: Bishunpur
Village	: Kujam
Habitation Name	: Dipa Kujam
PVTG Name	: Asur
Total Population	: 1635
PVTG Population	: 314

Latitude :23.3032 Longitude :84.2940

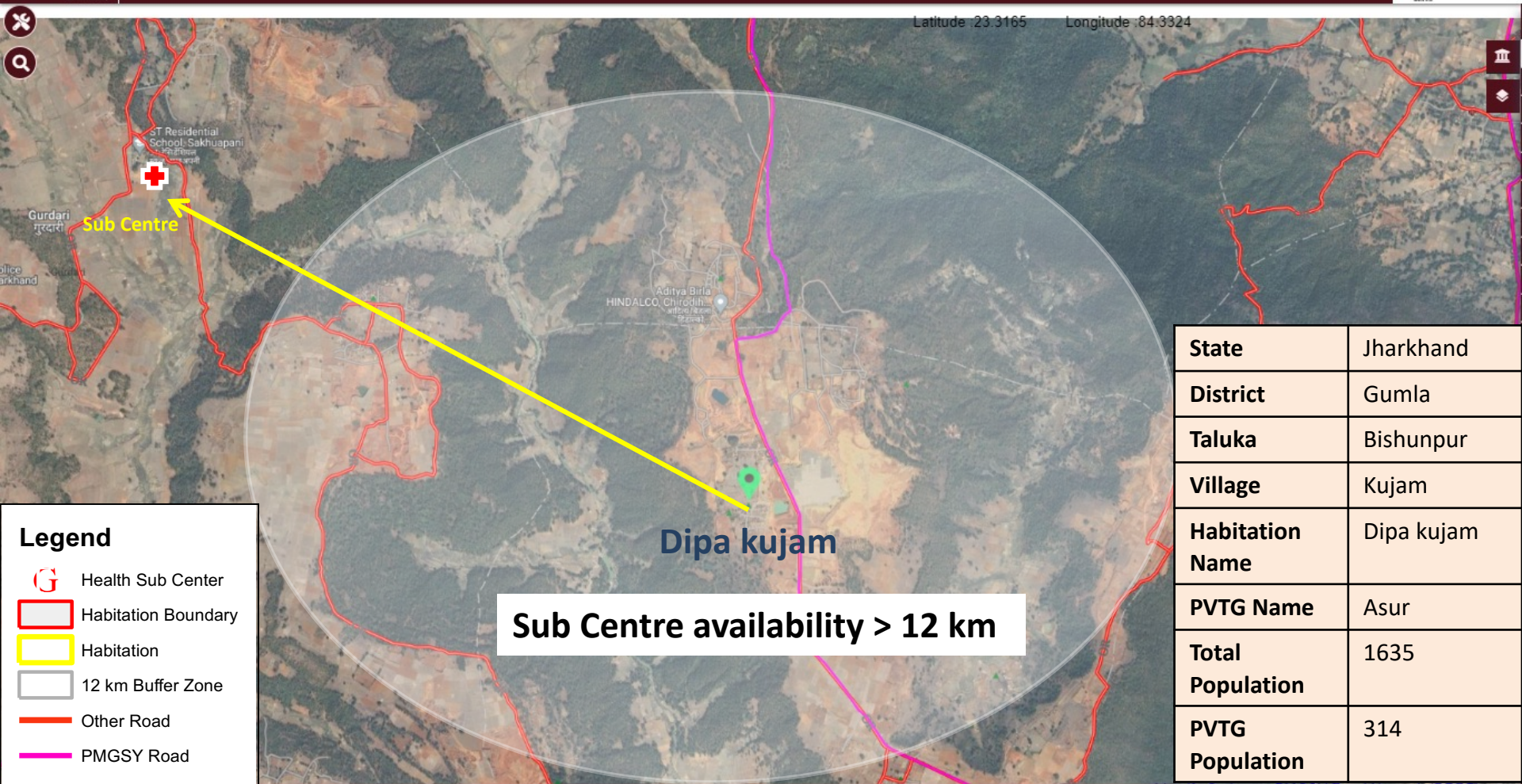


Dipa Kujam

<i>Gap identification through Mobile Application</i>	
Village Road Connectivity	Yes (Kaccha Road)
Primary School	Yes
Power Supply	Yes
Mobile connectivity	Yes
Broadband Connectivity	Yes
Health center	No
Aganwadi Center	Yes
Skill center	No

Legend	
	Habitation Boundary
	Habitation

Latitude :23.3165 Longitude :84.3324



Legend

- Health Sub Center
- Habitation Boundary
- Habitation
- 12 km Buffer Zone
- Other Road
- PMGSY Road

State	Jharkhand
District	Gumla
Taluka	Bishunpur
Village	Kujam
Habitation Name	Dipa kujam
PVTG Name	Asur
Total Population	1635
PVTG Population	314



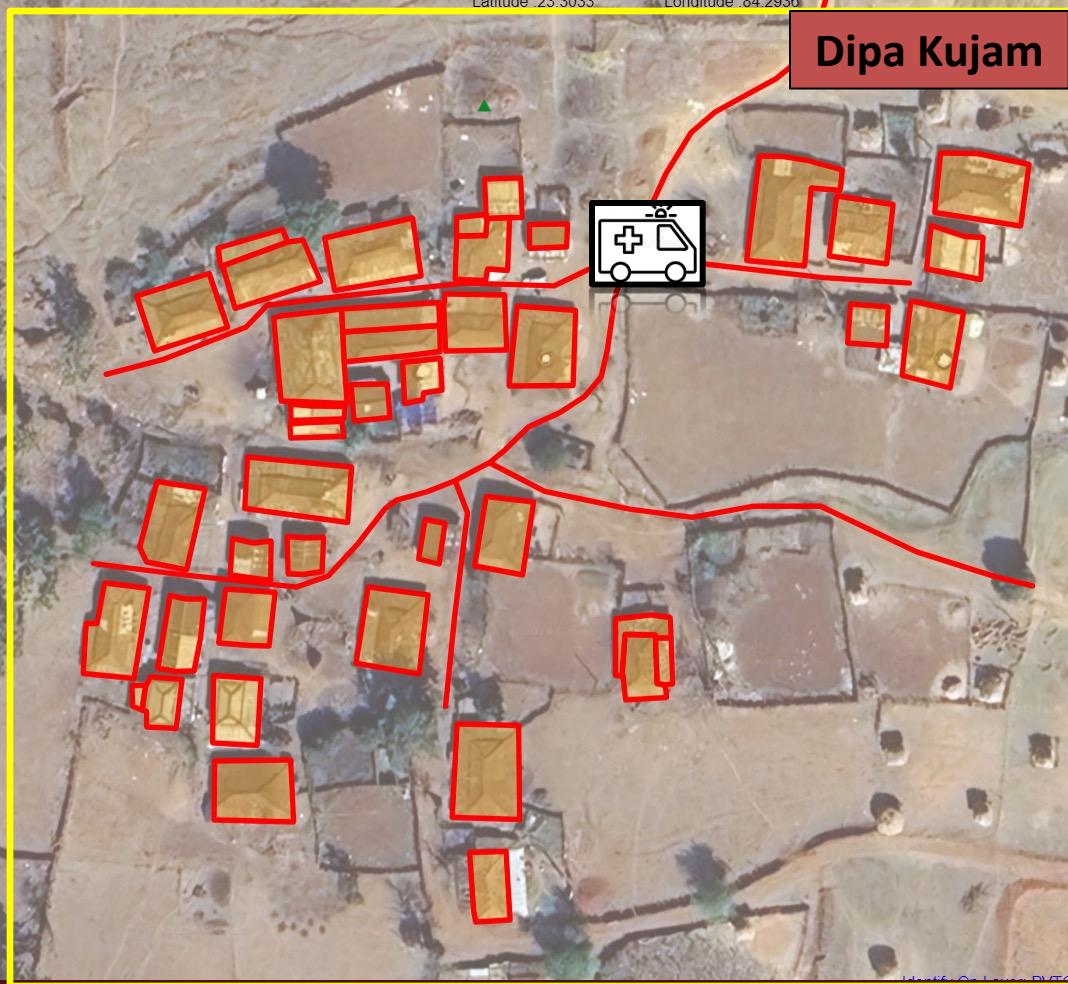
MMU Proposed

Revisit after every 14 days



Latitude: 23.3033 Longitude: 84.2936

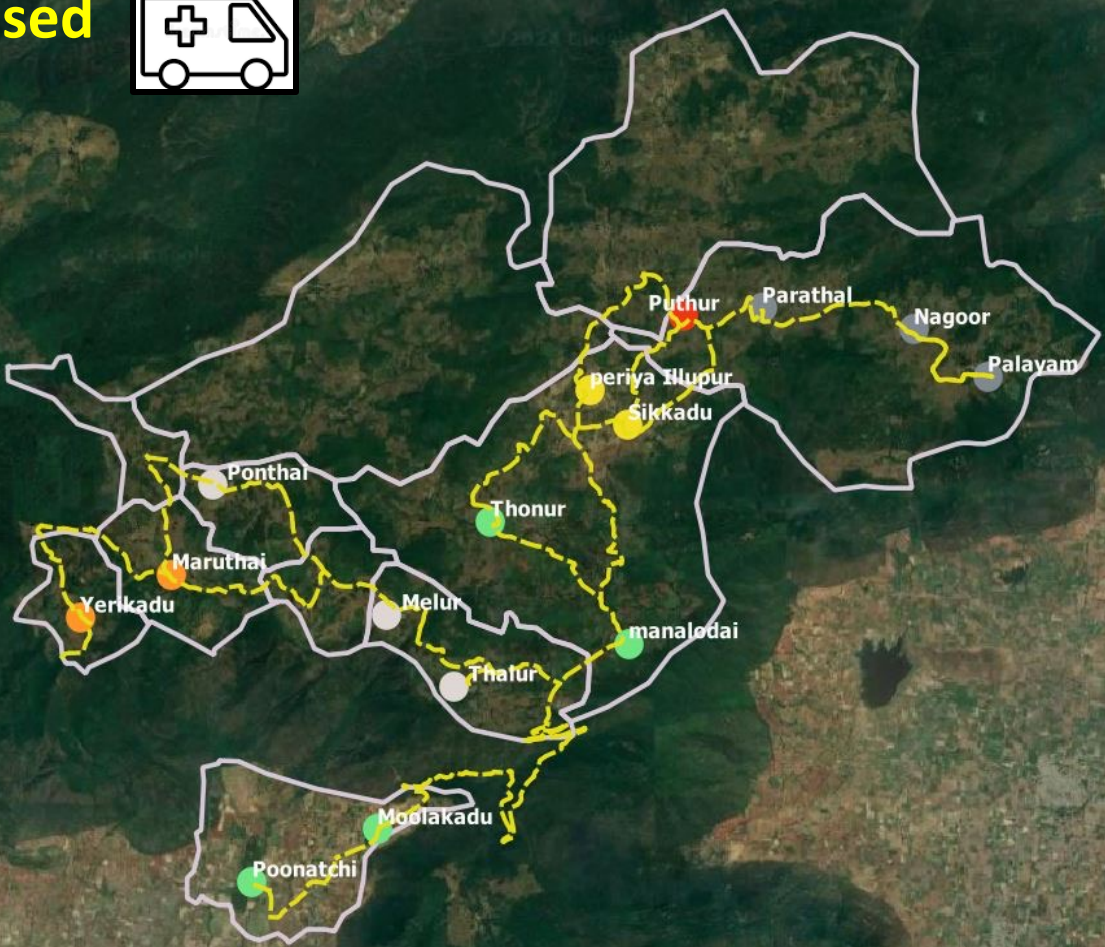
Dipa Kujam



Legend

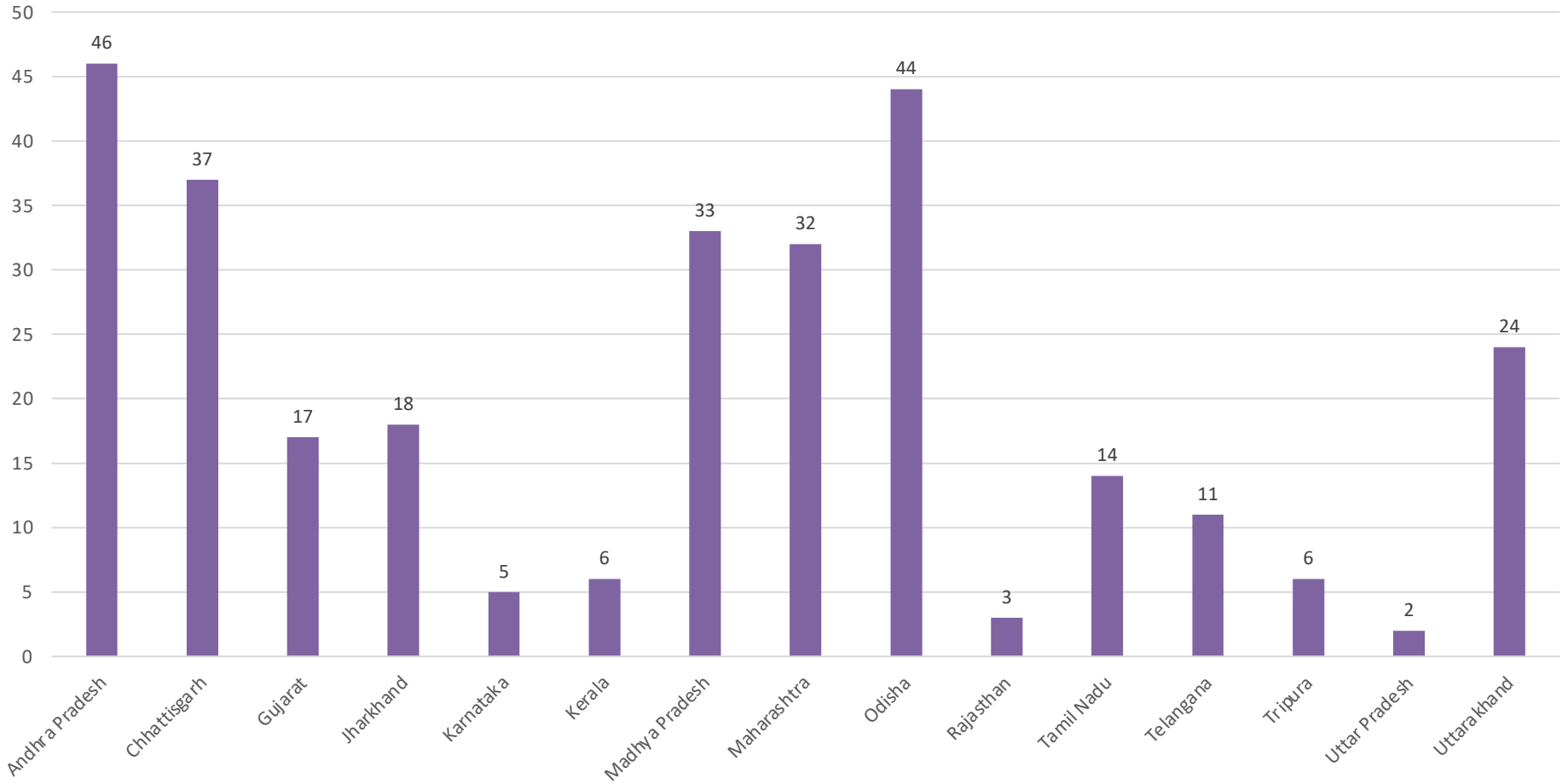
- Road
- Hamlet Boundary
- Household

MMU Proposed



Revisit after every 14 days

State wise: MMUs sanctioned/redeployed in PVTG areas



Achievements



Ministry of Tribal Affairs, Govt. of India

@TribalAffairsIn

"Healthcare on wheels! 🚚🏠"

Under the National Health Mission, M/o Health and Family Welfare are deploying Mobile Medical Units equipped with medicines, with a goal of 1000 MMUs (10 per district). It's about reaching PVTG Communities.

[#PMJANMAN](#) [#EmpoweringTribalsTransformingIndia](#)



Empowering Tribals

Transforming India



PM-JANMAN

(Pradhan Mantri Janjati Adivasi Nyaya Maha Abhiyan)

Under this scheme

SABKO SWASTHYA

Improved access to Health Coverage through ANM in multipurpose center in Mobile Medical Van





300 MMUs have been
Sanctioned